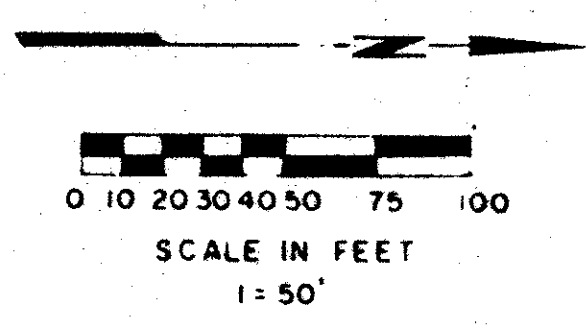


47/118

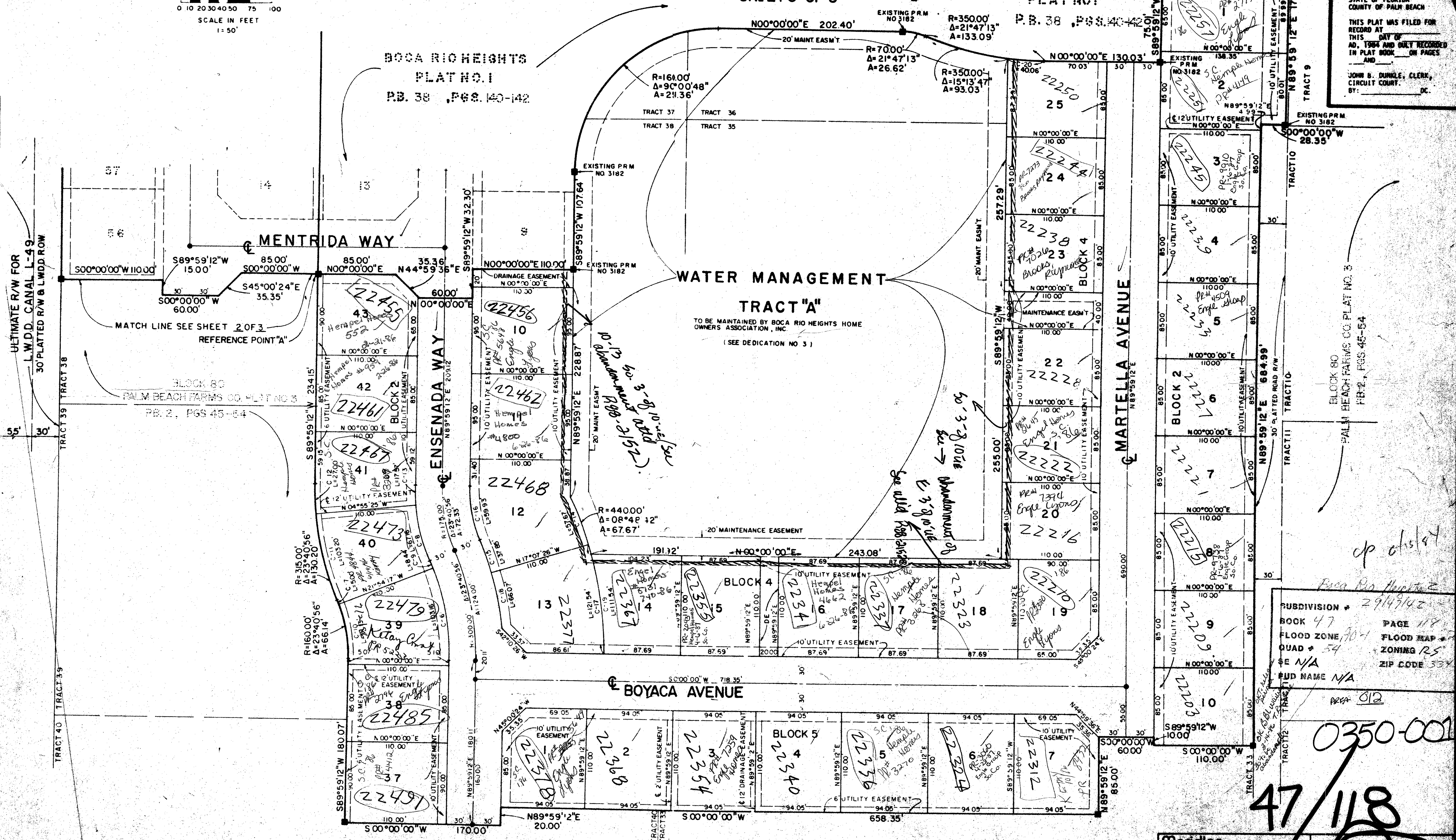
BOCA RIO HEIGHTS, PLAT NO. 2

BEING A REPLAT OF A PORTION OF BLOCK 80,
PALM BEACH FARMS COMPANY PLAT NO. 3, PLAT BOOK 2,
PAGES 45 THRU 54, PUBLIC RECORDS, PALM BEACH COUNTY,
FLORIDA, LYING IN SECTION 29, TWP. 47 S., RGE. 42 E.,
PALM BEACH COUNTY, FLORIDA.

SHEET 3 OF 3



STATE OF FLORIDA
COUNTY OF PALM BEACH
THIS PLAT WAS FILED FOR
RECORD AT
THIS DAY OF
AD, 1984 AND ONLY RECORDED
IN PLAT BOOK ON PAGES
AND
JOHN B. DUNKLE, CLERK,
CIRCUIT COURT.
BY: _____ DC.



SUBDIVISION # 29149142
BOOK 47 PAGE 118
FLOOD ZONE A0-1 FLOOD MAP # 2-100
QUAD # 54 ZONING RS
SE N/A ZIP CODE 33413
PUD NAME N/A
PR# 012

0350-001

47/118

Meridian
Surveying and Mapping, Inc.
2328 So. Congress Ave.
Suite 7-0
West Palm Beach, Florida 33406
DATE DEC 1-79
PROJECT 83-P-066

BOCA RIO
HEIGHTS
PLAT NO. 2

11